



Home energy guide

Solutions for your home.
Money in your pocket.



2024 programs for our Minnesota customers | otpc.com/WaysToSave

Appliance rebates

Update your home with new appliances.

ENERGY STAR® appliances use less energy, meet stringent quality specifications, and offer advanced functions to make managing your home easier. Purchase a standard-sized ENERGY STAR®-rated appliance to qualify for a rebate. Limit one rebate per appliance type per year.

Find our rebate application at otpc.com/appliances and start saving!

Appliance rebates

\$200 rebate

NEW Heat pump water heater

\$50 rebate

NEW Heat pump clothes dryer

NEW Induction cooktop or range with induction cooktop

Refrigerator

Chest or upright freezer

Dishwasher

Clothes washer

Electric clothes dryer

\$25 rebate

NEW Air purifier

NEW Dehumidifier

Limit one rebate per appliance type. Compact refrigerators and freezers less than 7.5 cubic feet don't qualify.

Note: Dehumidifiers must have a minimum capacity of 50 pints per day.

Appliance recycling rebates

\$50 rebate

Refrigerator
10 to 27 cubic feet in size

Freezer
10 to 27 cubic feet in size

\$25 rebate

Window air conditioner

\$10 rebate

Dehumidifier

Appliance recycling

Recycle your old working units to earn rebates!

Recycle up to two refrigerators and freezers and up to two window air conditioners and dehumidifiers each year. A window air conditioner and/or dehumidifier must be picked up during the same appointment as a fridge or freezer. Pickup is free.

Schedule your appointment
May 1 through September 30 by calling **888-634-4485**
or visiting otpc.com/ApplianceRecycling.

Recycle your window air conditioner and dehumidifier too!



LED lighting and fixtures

The smart way to light your life!

Light-emitting diode (LED) bulbs use up to 90 percent less energy than traditional bulbs and come in a variety of colors and designs.

Our lighting program offers reduced pricing through participating retailers and hard-wired fixture rebates for both existing and new homes. Screw-in LED bulbs don't qualify for rebates through the new construction or retrofit programs listed below.

Get your LED bulbs through **instant in-store discounts**. Locations vary. See otpc.com/LEDs for a list of participating stores.



Retrofit lighting rebates

Existing	Replaced with	Rebate per watt saved
Low-efficiency incandescent	Hard-wired LED indoor	60¢
	Hard-wired LED outdoor	40¢
Low-efficiency fluorescent	Hard-wired LED	60¢
Standard T8 fluorescent lamps	LED lamp-only retrofit	40¢
Occupancy/daylight sensing controls		\$200/ connected kW

New construction high-efficiency lighting rebates

LED technology	Wattage	Rebate per fixture
Indoor LED fixture	<30	\$15.00
	30 to 49	\$25.00
	50 to 79	\$35.00
	80 to 99	\$50.00
	>99	\$75.00
Outdoor LED fixture	<30	\$10.00
	30 to 49	\$15.00
	50 to 79	\$20.00
	80 to 99	\$25.00
	>99	\$30.00
Occupancy/daylight sensing controls		\$200/connected kW



Heat pumps

Efficient and environmentally friendly!

Heat pumps don't make heat. They move it—using free heat available in the air or ground to provide winter-time heating. And they cool too! By combining our generous rebates with federal tax credits, heat pumps are a great value and a source of long-term energy savings.



Geothermal heat pump (GHP)

A GHP is clean, safe, and environmentally friendly and delivers **four to six units of heat for each unit of energy used** reducing heating and cooling costs by up to 70 percent.

GHP efficiency rebate requirements

GHP	Loop type	COP	EER
Water to air	Open loop	4.1	21.1
Water to air	Closed loop	3.6	17.1
Water to water	Open loop	3.5	20.1
Water to water	Closed loop	3.1	16.1
Direct exchange	—	3.6	16
GHP single unit ≥ 6 tons	—	3.1	13

Cold-climate heat pump (CCHP)

A CCHP delivers efficient comfort down to sub-zero temperatures and provides up to 90 percent of your heating needs.

Air-to-water heat pump (AWHP)

An AWHP improves the efficiency of hot water heating systems by using free energy available in the air and transferring it through water.

Terms: COP: coefficient of performance; EER: energy efficiency ratio; SEER: seasonal energy efficiency rating; HSPF: heating season performance factor

Minnesota air conditioner (AC) and heat pump rebates

Type	Configuration	Required ratings		Rebate
		SEER2	HSPF2	
ENERGY STAR AC	Ducted/ductless	≥ 15.2	—	\$100/unit
Standard heat pump	Ducted/ductless	≥ 14.3	≥ 7.5	\$300/ton
Cold-climate heat pump	Ductless	≥ 16.0	≥ 9.5	\$600/ton
Cold-climate heat pump	Ducted	≥ 15.2	≥ 8.1	\$800/ton
Air-to-water	—	COP ≥ 1.7 A5W110		\$800/ton
Geothermal: Residential	—	See table above.		\$1,200/ton

Additional heat pump rebates

Heat pumps on energy control

Receive an additional \$40-per-ton rebate when an efficiency rebate-eligible CCHP or GHP is installed on our Dual Fuel, Deferred Load, or Residential Demand Control (RDC) Rate, or when a qualified air-to-water heat pump is installed on our Dual Fuel Rate.

Buffer tank or desuperheater

Get a \$200-per-ton rebate when you add a buffer tank to an AWHP or a desuperheater to a GHP installation for domestic hot water preheating. A buffer tank must have heating coils. The rebate is based on the size (tons) of the associated rebate-eligible heat pump. Limit 20 tons.

Quality installation rebate

Receive an additional rebate of **\$200 per ton** for a quality heat pump installation and **\$50 per unit** for a quality air-conditioner installation. Find certified contractors at otpc.com/FindAContractor.



Rebate available for heat pump or air-conditioner tune up

A properly maintained heat pump or air conditioner can provide up to 25 percent energy savings. Receive a **\$150 rebate** for a heat pump tune up or a **\$75 rebate** for an air-conditioner tune up. Tune up must be completed by a licensed contractor. Tune-up rebates are available once every ten years per account.

Combine our rebates with federal tax credits

Lower your upfront costs and gain long-term savings!

Example 1: A 3-ton ducted cold-climate heat pump installed by an approved contractor on an off-peak rate.

Rebate type	Rate per ton	Rebate amount
CCHP ducted	\$800	\$2,400
Quality installation	\$200	\$600
Installed on an off-peak rate	\$40	\$120
Total rebate		\$3,120

Also eligible for a tax credit up to \$2,000!

Example 2: A 5-ton geothermal heat pump with a desuperheater installed by an approved contractor on an off-peak rate.

Rebate type	Rate per ton	Rebate amount
Geothermal residential	\$1,200	\$6,000
Desuperheater	\$200	\$1,000
Quality installation	\$200	\$1,000
Installed on an off-peak rate	\$40	\$200
Total rebate		\$8,200

Also eligible for a 30% tax credit!

For more information, visit otpc.com/HeatPumps.

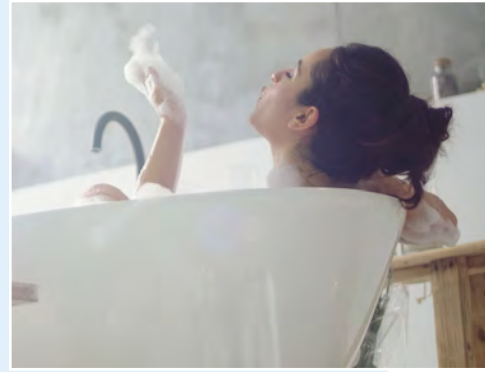
Electric water heaters

Heating life, saving money!

Electric water heaters operate at up to 96 percent efficiency. And when you operate yours on one of our off-peak programs, you'll save even more with **electric price discounts** or a **\$10-a-month bill credit**.

- Get a **\$400 rebate** when you install an 80-gallon or larger water heater new to off-peak control. Get a **\$200 rebate** for a replacement.
- Get a **\$200 rebate** when you install a 50-gallon water heater new to off-peak control. Get a **\$100 rebate** for a replacement unit.

Water heaters must be rated with a minimum .90 Uniform Energy Factor and be subject to energy control to qualify.



NEW

Get a \$200 rebate on an efficient heat pump water heater!

Controlled service isn't required.



Smart thermostats

Flexibility that makes saving easy.

If you heat or cool with electricity, you may qualify for a rebate for an eligible Tier II or Tier III smart thermostat.

- Rebates of **\$100 for Tier II** and **\$150 for Tier III** qualifying smart thermostats are available if you heat with electricity, including heat pumps and plenum heaters.
- Rebates of **\$100 for Tier III** qualifying **line voltage** smart thermostats are available if you use non-central heating electric technologies as your primary heat source, including baseboard.
- Rebates of **\$35 for Tier II** and **\$50 for Tier III** qualifying smart thermostats are available if you have electric cooling but not electric heating.

To find the current list of qualifying smart thermostat models, visit otpc.com/SmartThermostats.



Insulation

Add comfort where it counts.

If you heat with electricity, you may qualify for up to **\$2,800 in rebates** when you update your home's efficiency.

- **Up to \$1,000** for attic bypass sealing and insulation.
- **Up to \$1,000** for upgrading wall insulation.
- **Up to \$800** for air sealing and weather stripping.

To qualify, work with a contractor to meet R-level requirements. This rebate isn't available for insulation of new construction homes. Learn more at otpc.com/Insulation.

Home efficiency **tax credits of up to \$1,200 are available**. Consult your tax preparer before making a purchase. Learn more at otpc.com/IRA.

Window rebates available

Receive a **\$25 rebate** for each ENERGY STAR® window installed. Applies to both remodels and new construction.



Electric heating

Safe. Comfortable. Efficient.

Electric heating technologies provide clean, efficient, and economical warmth. Rebates are available when a minimum of 9 kilowatts (kW) is installed on our discounted Dual Fuel or RDC Rate.

Receive a **\$20-per-kW rebate** for baseboard heat, cove heat, a garage unit heater, radiant ceiling heat, or nonstorage floor-warming heat installed beneath flooring material.

Combine a heat pump with an off-peak electric system!

Install a qualified cold-climate or geothermal heat pump on our Dual Fuel, Deferred Load, or RDC Rate and receive an additional **\$40-per-ton rebate on top of any efficiency rebates**. Adding a heat pump to your off-peak system is more affordable than ever!

Learn more at otpc.com/HeatingRebates.

Receive a **\$40-per-kW rebate** for any of the following:



A plenum heater sits within your duct work just above your furnace to create a dual fuel system.



An electric boiler heats liquid for radiator, baseboard, and hydronic floor heating systems.



An electric furnace is a whole-house system.



Electric cable or panel storage heating is installed under the slab during new construction. (Dual Fuel Rate only. RDC customers see next page.)



Heat storage systems

Enjoy comfort and savings.

Thermal-storage heating systems store heat in sand or bricks and release it when you need it. They also qualify for rebates and our discounted rates.

Get a **\$75-per-kW rebate** when you install a minimum of 9 kW on our Deferred Load, RDC, or Fixed Time of Delivery Rate.

Eligible applications include central furnaces, room units, underfloor cable or panel systems, and electric boilers installed to serve underfloor hydronic systems.

Learn more at otpc.com/HeatingRebates.



CoolSavings

Stay cool and save this summer!

Enroll in CoolSavings air-conditioning cycling and save **\$33 on summer cooling costs**. We'll apply an **\$8.25 credit** to your monthly bills June through September.

- Central AC and ducted heat pumps may qualify.
- Units served on a residential service or RDC Rate are eligible.
- Systems must include outside disconnect switches.

Enroll today at
otpc.com/CoolSavings.



Electric vehicles

Drive electric and save with rebates and tax credits!

Electric vehicle (EV) energy costs are less than half that of traditional gas vehicles. By combining our new rebates with **federal tax credits of \$4,000 or \$7,500**, EVs are also price competitive.

Qualify for the following rebates when you purchase from a licensed dealer:

- **\$3,000** for a new battery electric vehicle (BEV).
- **\$1,500** for a new plug-in hybrid electric vehicle (PHEV).
- **\$1,500** for a used BEV.
- **\$750** for a used PHEV.

For more information, visit otpc.com/EVs.



Charge your EV with off-peak electricity

Install a Level 2 electric vehicle charging station on a qualified rate and receive a **\$500 rebate**. Eligible rates include our Dual Fuel, Deferred Load, Fixed Time of Delivery, RDC, and Minnesota EV Charging Rates. It's like driving for 50 cents a gallon!

Electric outdoor equipment rebates

Electric outdoor equipment uses just five percent of the energy of comparable gas models. And our new rebates make them cost effective!

Electric equipment rebates

New outdoor electric equipment	Rebate per unit
Push mower	\$250
Rider mower	\$750
Snow blower	\$150
Lawn tools (weed trimmer, leaf blower)	\$25

Find our rebate forms at otpc.com/OutdoorEquipment.



My Account

Enjoy an enhanced online experience!

Use our **My Account** portal to manage your electric service account online or from your smartphone.

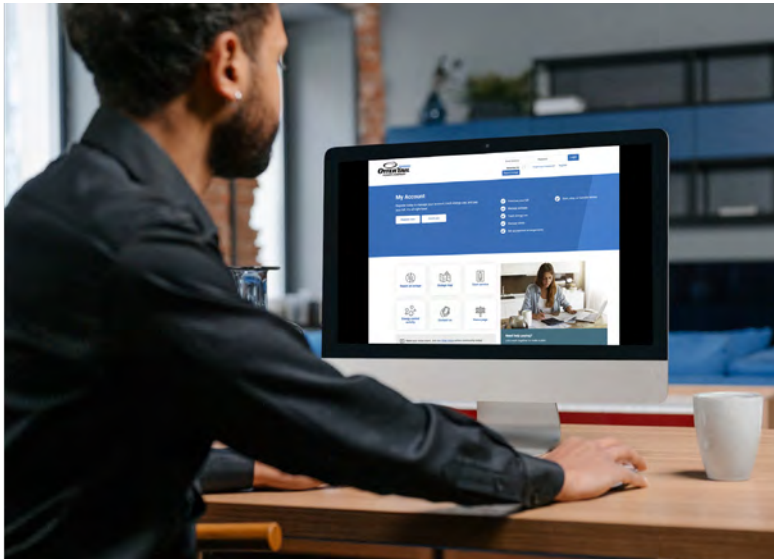
- View and pay your bill by making a Quick Pay payment, setting up autopay, or scheduling your payment each month from a variety of enhanced digital wallet options.
- Access interactive usage information and manage your accounts from a customized view.
- Manage notification options.
- Enjoy self-serve capabilities on a variety of items, including payment arrangements and service requests.

Enroll now at **otpc.com**.



Get the app!

Download **My Meter** at Google Play or the Apple App Store. Open and select **Otter Tail Power Company**.



Find a contractor tool connects customers to installers

Locate a contractor with experience installing energy- and money-saving electric technologies with our new online Find a contractor tool. Visit **otpc.com/FindAContractor** for details.

Let us help you save!

Reach out *before* making improvements.

Together, we'll walk through your options and give you information to talk about with your contractor.

Look for our rebate forms at
otpc.com/RebateApplication.



Visit otpc.com/WaysToSave

Our updated **Ways To Save** section on our website offers options to save energy and reduce operating costs for heating, cooling, water heating, and more!

Send us an email
IdeaCenter@otpc.com.

Call our Idea Center
800-493-3299.

Options available for Minnesota customers only.
Programs may change at any time. Receipts required. Limits apply.

